

EK SPEC 170 Contact Wire



1 Dimensions

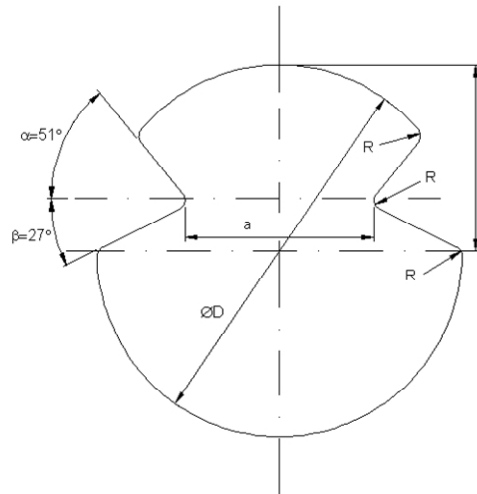
Area: 80, 100 och 107 mm²

2 Tolerance of Dimensions

Tolerance of dimensions according to table and Figure 1 or by agreement.

Area (mm ²)	Area (%)	D (mm)	a (mm)	b (mm)	α°	β°
80	± 3	10.6	5.6 ± 0.20	3.80	+0/-2°	+0/-2°
100		12.0		4.00		
107		12.2		4.00		

Fig. 1 Cross section of contact wire. R=0.4mm



Profile AC according to EN 50149

3 Form of delivery

Wooden drum SJ1. Approx Capacity max 1800 kg.

4 Requirements

Copper Cu-ETP

Density: 8.93 g/cm³

Resistivity: max 17.77 nΩm

Elongation: L₂₀₀ 3-8 %

Wrapping test: min. 3 turns

Winding test: min. 5 turns

Area (mm ²)	Resistance Max. (Ω/km)	Calculated Weight (kg/km)	Breaking load Min. (kN)	Tensile Strength Min. (N/mm ²)
80	0.229	714	28.9	375
100	0.183	893	36.2	375
107	0.153	956	37.2	360

5 References

EN 50149 Railway applications – Fixed installations – Copper and copper-alloy grooved contact wire

EN 1977 Copper and copper-alloys – Copper drawing stock (Wire rod)