

EK SPEC 150

Contact Wire, silver alloy copper



1 Dimensions

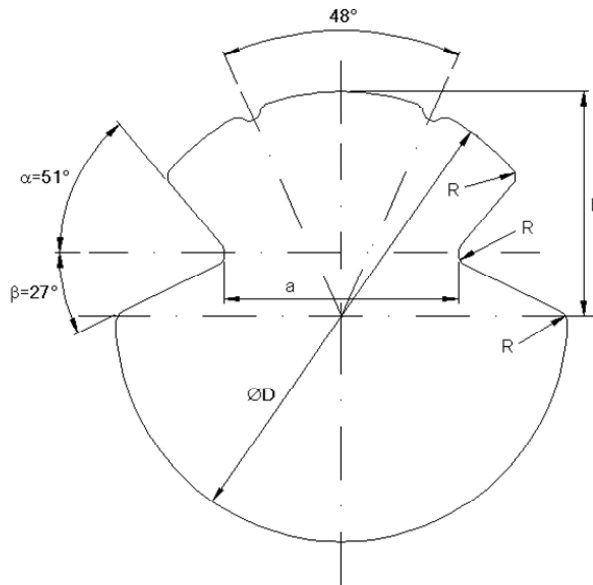
Area: 100 och 120 mm²

2 Tolerance of Dimensions

Tolerance of dimensions according to table and Figure 1 or by agreement.

Area (mm ²)	Area (%)	D (mm)	a (mm)	b (mm)	α°	β°
100	± 3	12.2	5.6 ± 0.20	4.00	+0/-2°	+0/-2°
120		13.2				

Fig. 1 Cross section of contact wire. R=0.4mm



Profile AC according to EN 50149

3 Form of delivery

Wooden drum SJ1. Approx Capacity max. 1800 kg.

4 Requirements

Copper CuAg 0.10

Density: 8.93 g/cm³
 Resistivity: max. 17.77 nΩm
 Silver content: 0.08-0.12 %
 Wrapping test: min. 3 turns
 Winding test: min. 5 turns
 Elongation: L₂₀₀ 3-10 %

Area (mm ²)	Resistance Max. (Ω/km)	Calculated Weight (kg/km)	Breaking load Min. (kN)	Tensile Strength Min. (N/mm ²)
100	0.183	893	34.9	360
120	0.153	1072	40.7	350

5 References

- EN 50149 Railway applications – Fixed installations – Copper and copper-alloy grooved contact wire
- EN 1977 Copper and copper-alloys – Copper drawing stock (wire rod)

Author: Hendess, Viktor
 Documentno: 0170

Approved by: Ciardi, Jonas
 Issue: 3

Approved: 2017-08-29